



Coventry & Warwickshire Labour Market Summary

July 2011



research@warwickshire.gov.uk

Introduction

The Observatory has been commissioned to produce a quarterly labour market summary for the Coventry and Warwickshire sub-region. The briefing contains information on Job Seekers Allowance claimants, vacancies and worklessness data as well as the key messages emerging from the data.

Figures relate to Coventry & Warwickshire combined unless stated otherwise. Please contact the Observatory using the links at the foot of this page if you have any queries.

Key Messages

- The number of job seeker allowance claimants in Coventry & Warwickshire has fallen for the fourth month in a row
- The biggest fall in claimants was in the 18-24 age group
- There are six claimants for every notified vacancy in Nuneaton & Bedworth, compared to just more than one per vacancy in North Warwickshire
- There are more than 72,300 people claiming out of work benefits, 42% of which are claiming ESA or Incapacity Benefit

Glossary

JSA = Job Seekers Allowance

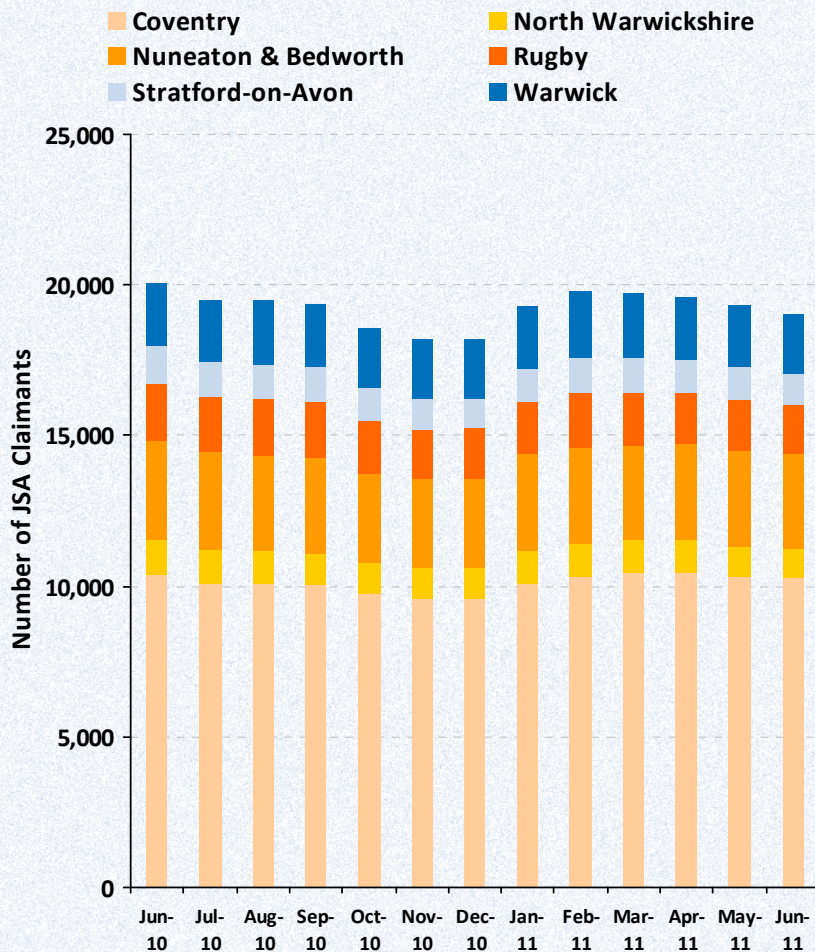
ESA = Employment and Support Allowance

Notified Vacancy = Vacancies available through Jobcentre Plus

Out of Work Benefit = a range of benefits paid to those who are economically inactive, such as Incapacity Benefit

Job Seekers Allowance

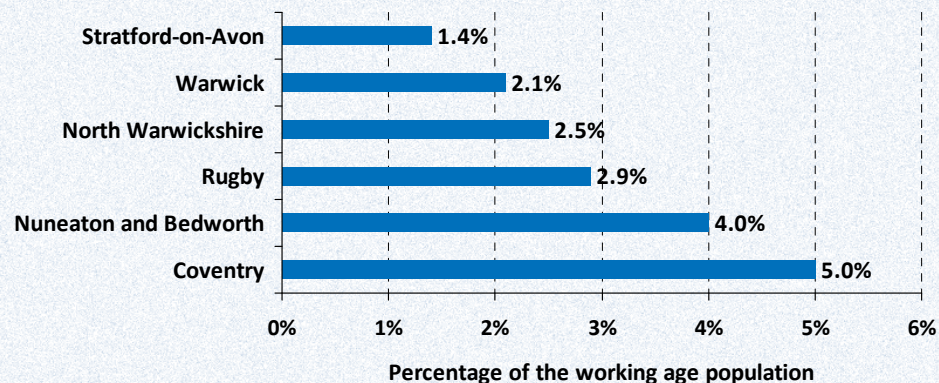
JSA Claimant Trend



Latest JSA Claimant Totals

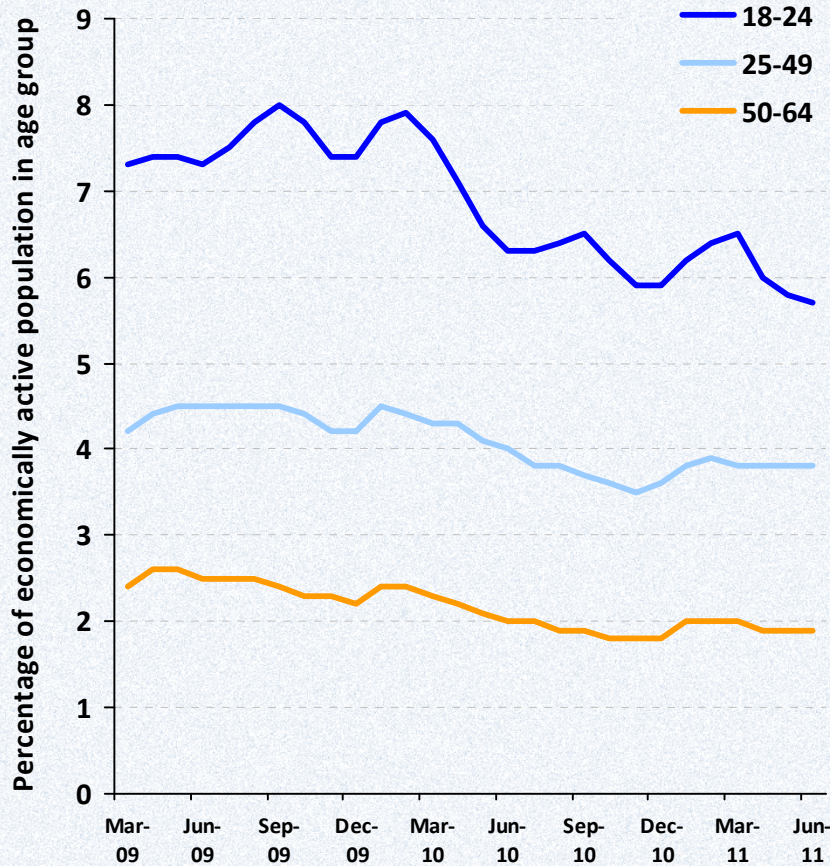
	June 2011	% quarterly change	% yearly change
Coventry	10,275	-1.4%	-1.0%
North Warwickshire	997	-10.7%	-13.0%
Nuneaton & Bedworth	3,086	-1.8%	-7.6%
Rugby	1,671	-4.5%	-10.6%
Stratford-on-Avon	1,021	-10.9%	-17.4%
Warwick	1,961	-8.7%	-6.4%

Latest JSA Claimant Rates

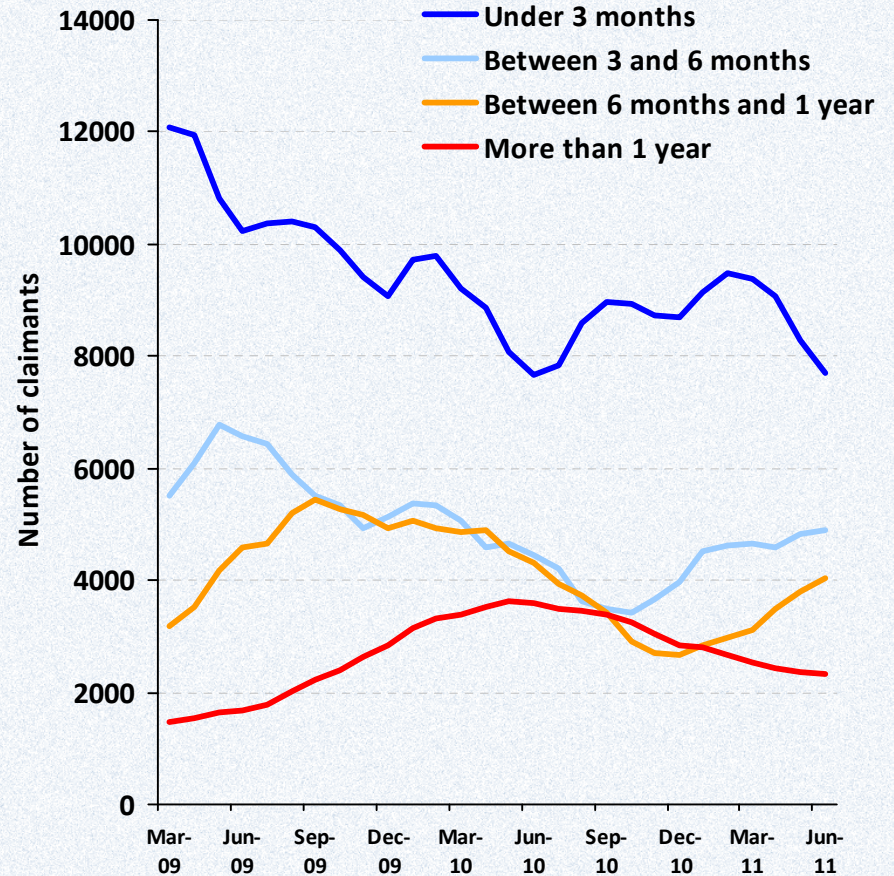


Job Seekers Allowance

JSA Claimants by Age

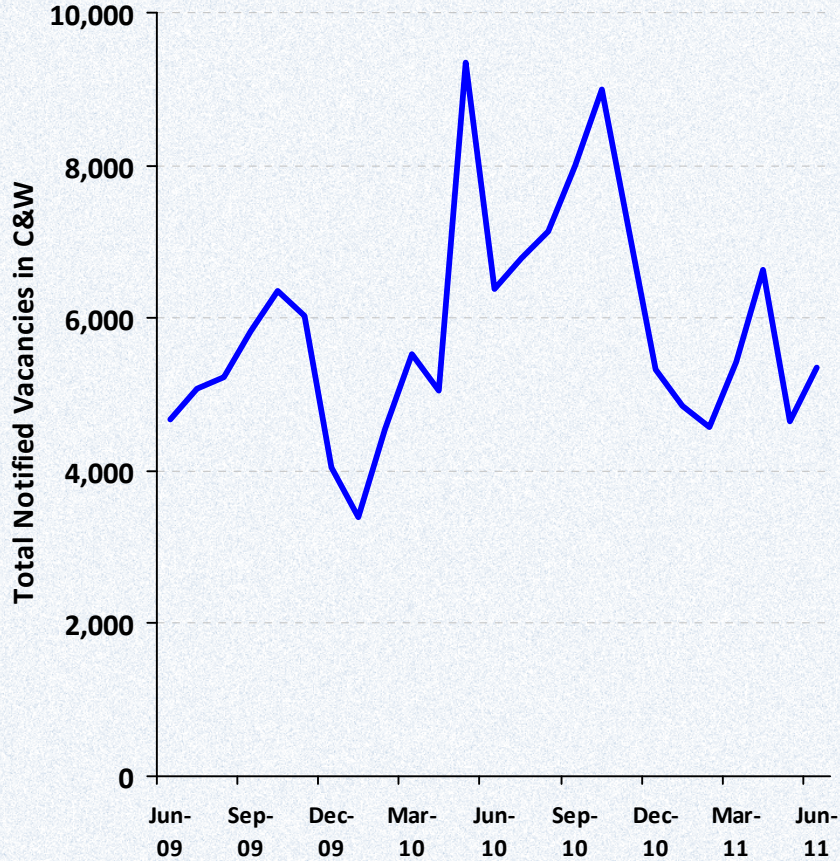


JSA Claimants by Duration

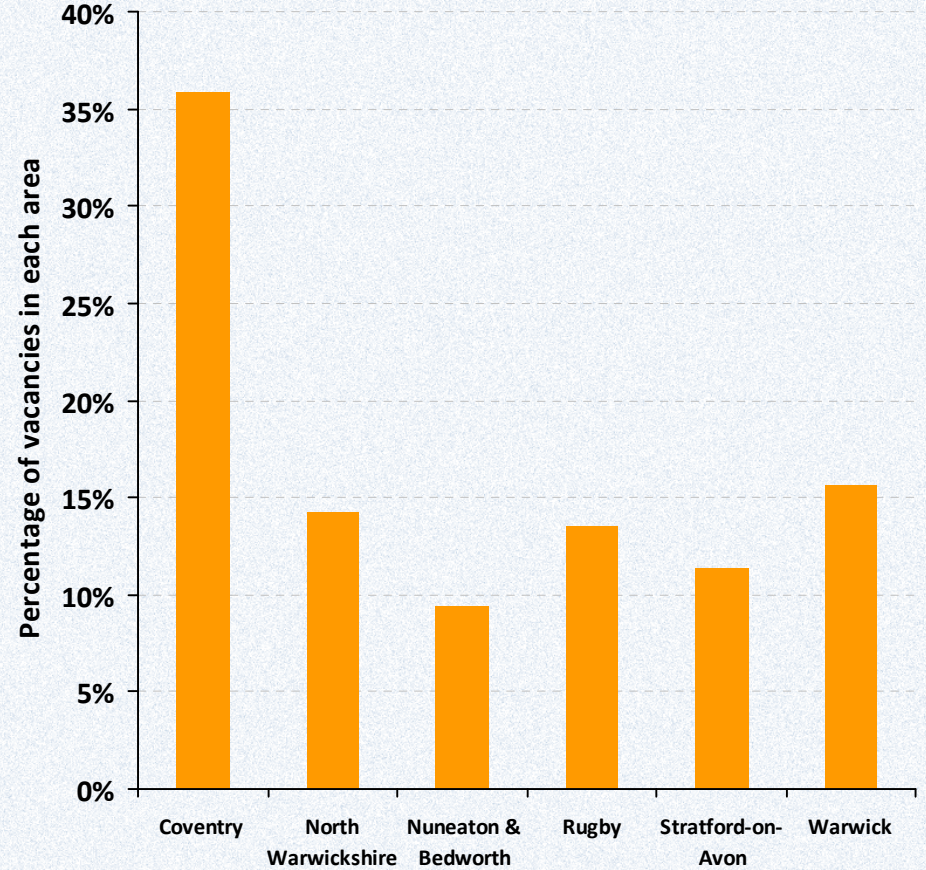


Vacancies

Notified Vacancies



Vacancies by Area

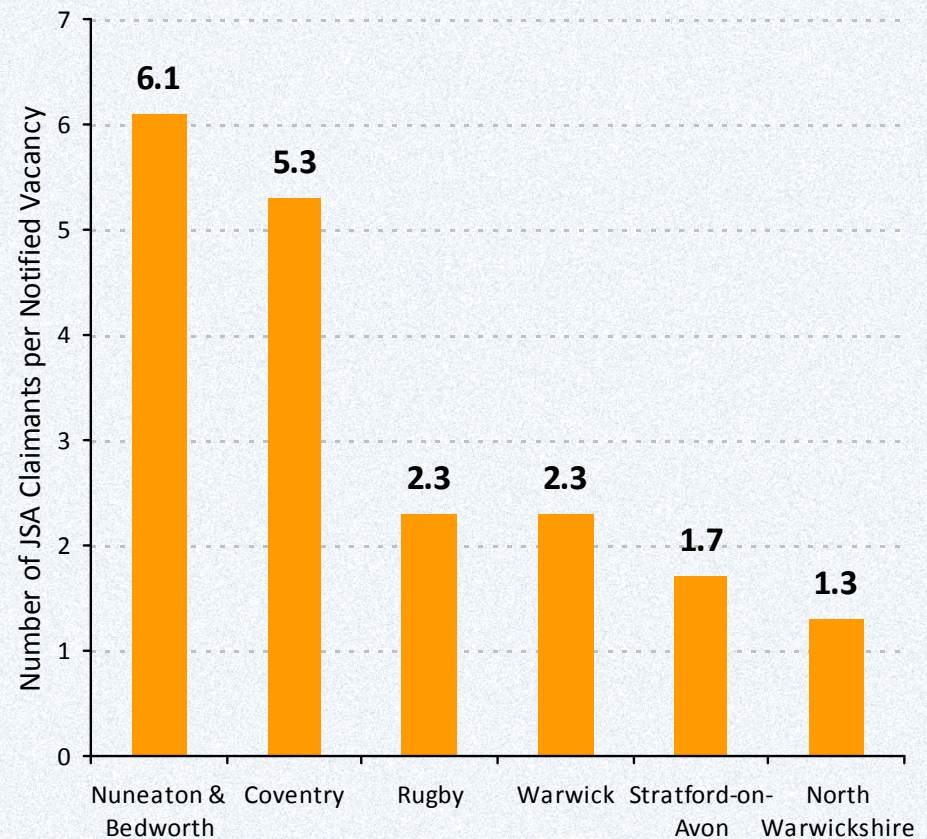


Vacancies

Vacancies by Type (top ten)

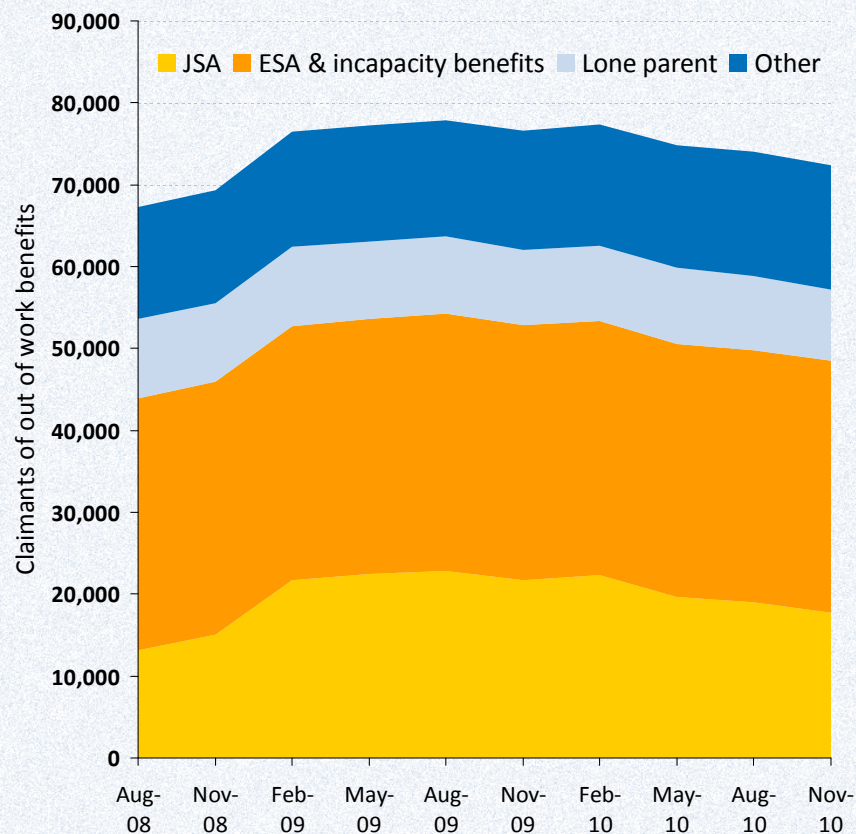
	Number	% of all vacancies
Heavy goods vehicle drivers	572	10.7%
Sales representatives	432	8.1%
Care assistants and home carers	330	6.2%
Other goods handling and storage occ.	271	5.1%
Fork-lift truck drivers	174	3.2%
Cleaners, domestics	171	3.2%
Sales and retail assistants	162	3.0%
Van drivers	154	2.9%
Chefs, cooks	144	2.7%
Metal machining setters/setter-operators	136	2.5%

Claimants per Vacancy



Out of work benefits ('worklessness')

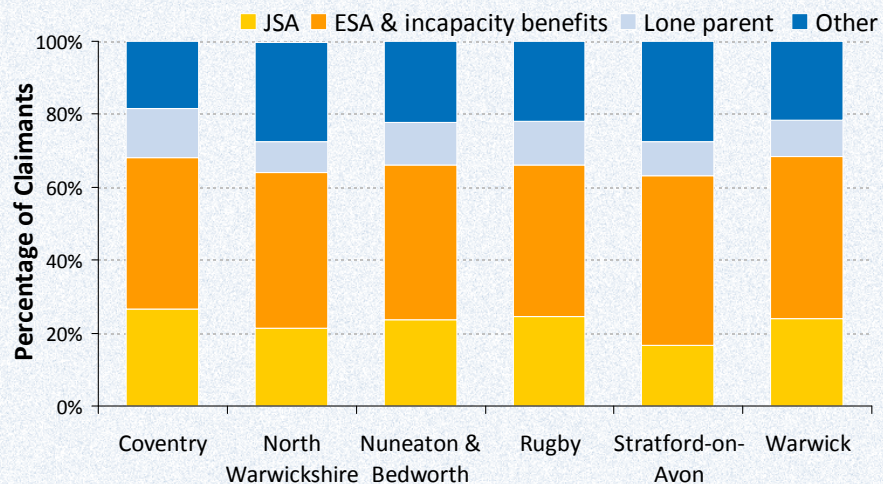
Worklessness Trend



Worklessness Rates by Area (Nov 2010)

	Claimants	% of working –age population
Coventry	35,090	17.0
North Warwickshire	4,650	11.6
Nuneaton and Bedworth	12,120	15.5
Rugby	6,550	11.2
Stratford-on-Avon	5,950	8.2
Warwick	8,000	8.6

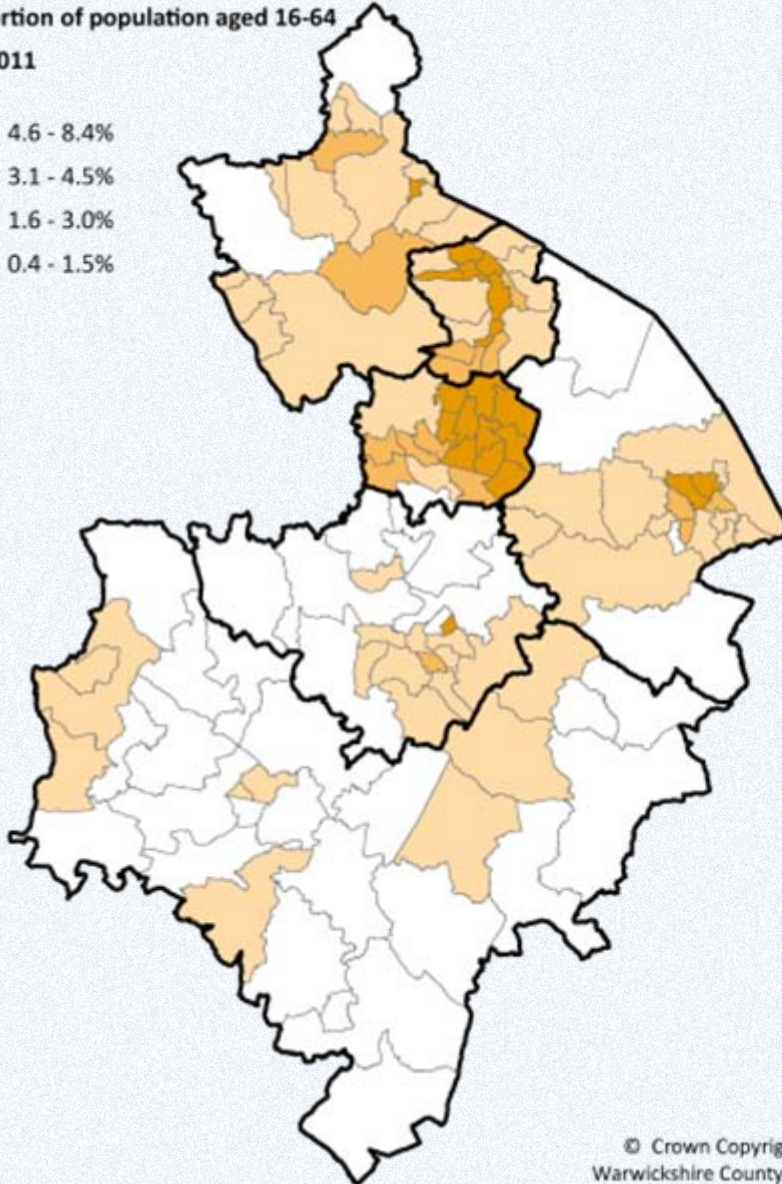
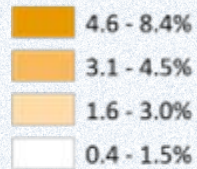
Benefit Claimants by Type and Area



Job Seekers Allowance rate by ward

Proportion of population aged 16-64

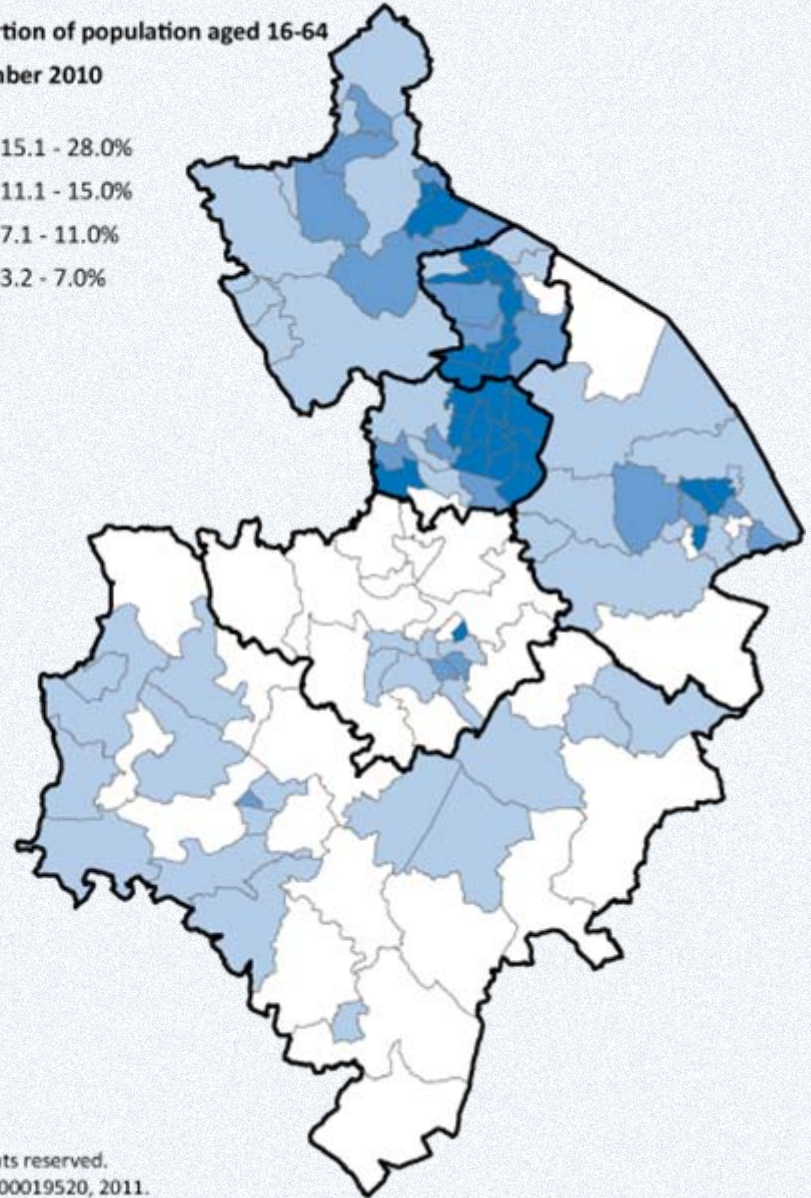
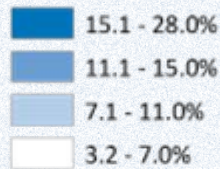
July 2011



Worklessness rate by ward

Proportion of population aged 16-64

November 2010



© Crown Copyright. All rights reserved.
Warwickshire County Council. 100019520, 2011.